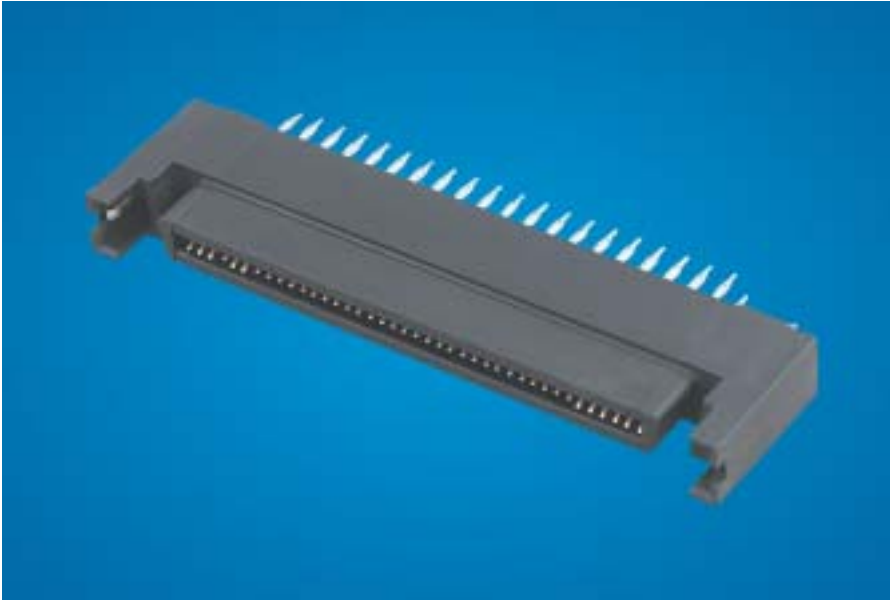




SCA2 Vertical Receptacles



Description

The SCA2 (Single Connect Attachment) connector system consists of plugs and receptacles designed to meet the industry's requirement for standard drive to backpanel interface in RAID (Redundant Array of Independent Disks) and Fibre Channel applications. The plug resides in the disk drive, while the receptacle is on the backpanel. The interface is governed by the Small Form Factor (SFF) standard.

FCI's SCA2 connectors feature high reliability dual-row blade-on-beam contacts on 1mm centerlines and alignment guides for "hot-mating" respectively.

Receptacles are available in 80 and 40 positions with two body heights, both vertical solder-to-boards and vertical press fit contacts tails. Edge-cards plugs are available in 80 and 40 position straddle mount or surface mount-in-line.

Target Markets

- Data
- Storage

Target Applications

- Disk drives
- Enterprise servers
- Disk array

Available in Asia/Pacific only

Features

- High reliability blade-on-beam contact design
- Alignment features provide blind mating
- First-Mate-Last-Break (FMLB) contacts in accordance with SFF Standards pattern
- Dual ESD contacts for static discharge paths
- High temperature plastic suitable for wave or reflow soldering

Benefits

- High density dual row on 1mm centerlines
- High performance contacts: 60 grams min. normal force 1.0 amps per contacts
 - FMLB contacts for hot-mating pattern per SFF standard
- Multiple configurations
 - Receptacles:
 - Vertical through hole
 - Press fit two heights for 11.5mm and 17.5mm plugs
 - Plugs:
 - Straddle mount and surface mount in-line
- Robust design
 - Blade-on-beam contacts
 - High temperature plastic
 - Low mating force
 - Au-plating
 - Built-in guidance and polarization
 - Compatible with IR and convection reflow soldering



SCA2 Connector Systems



Technical Features

Materials

- Housing: High temperature Nylon (UL 94 V-0)
- Color: Black
- Applicable solder process: Infrared, vapor phase, or convection reflow
- Contact: Phosphor Bronze
- Contact plating: Au over Ni SnPb tails

Mechanical Performance

- Durability (mating cycles): >500

Operating Performance

- Temperature range: -55°C to +105°C

Electrical Performance

- Insulation resistance: 1000M
- Dielectric withstand: 500 Volts
- Current rating: 1.0 Amp/contact
- Contact resistance: 15 m

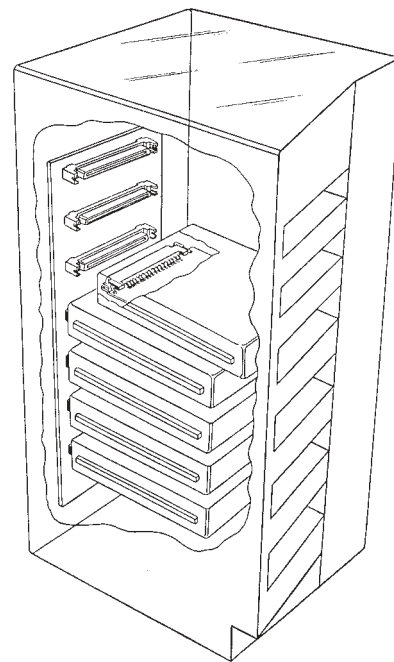
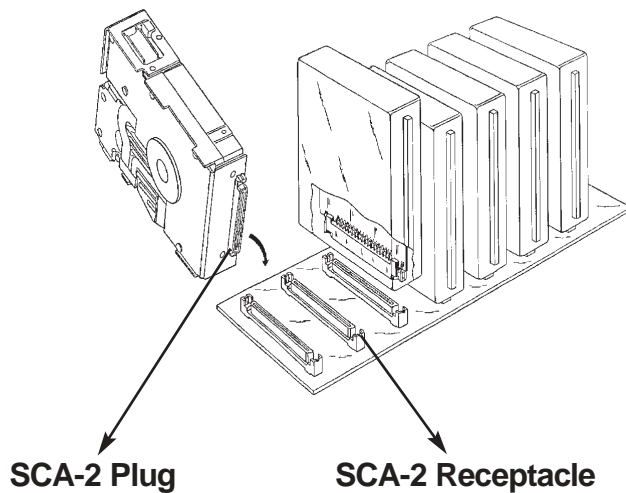
Specifications

- SFF-8451
- MIL-STD-202
- MIL-STD-1344

Packaging

- Trays

Application of SCA-2 Plug and Receptacle in Servers and HDD



Servers

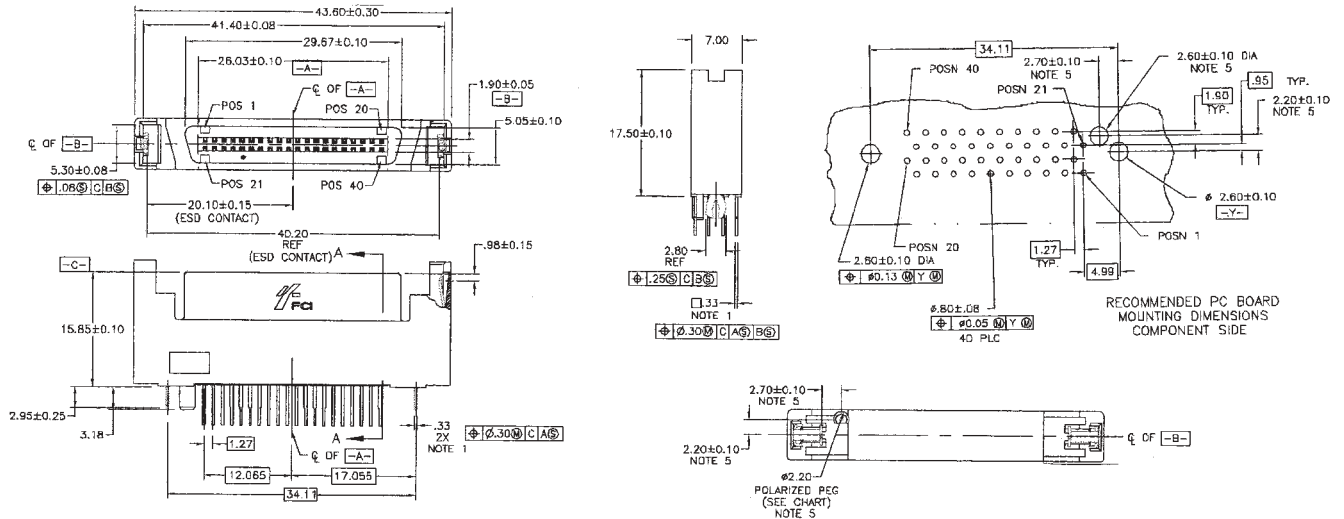


<http://www.fciconnect.com>

Asia/Pacific Tel.: 65 549 6666



Ordering Information SCA-2 Vertical Receptacles 40 Position



Part Number	PCB Mounting	Tail Length Dimension A		Height Dimension B		Peg Yes/No	Remarks
		mm	in.	mm	in.		
72443-101S	Press Fit (Extended Height)	3.79	0.149	17.50	0.689	Yes	
72443-102S		3.79	0.149	17.50	0.689	No	
72443-103S		4.60	0.181	17.50	0.689	Yes	
72443-104S		4.60	0.181	17.50	0.689	No	
72437-101S	Solder Tail (Extended Height)	2.79	0.110	17.50	0.689	Yes	
72437-102S		2.79	0.110	17.50	0.689	No	
72437-103S		3.18	0.125	17.50	0.689	Yes	
72437-104S		3.18	0.125	17.50	0.689	No	
72437-105S		4.06	0.160	17.50	0.689	Yes	
72437-106S		4.06	0.160	17.50	0.689	No	

Part Number	PCB Mounting	Tail Length Dimension A		Height Dimension B		Peg Yes/No	Remarks
		mm	in.	mm	in.		
55040-101S	Solder Tail (Extended Height)	2.79	0.110	17.50	0.689	Yes	With LEFT HAND-SIDE ESD CLIP only
55040-102S		2.79	0.110	17.50	0.689	No	
55040-103S		3.18	0.125	17.50	0.689	Yes	
55040-104S		3.18	0.125	17.50	0.689	No	
55040-105S		4.06	0.160	17.50	0.689	Yes	
55040-106S		4.06	0.160	17.50	0.689	No	

