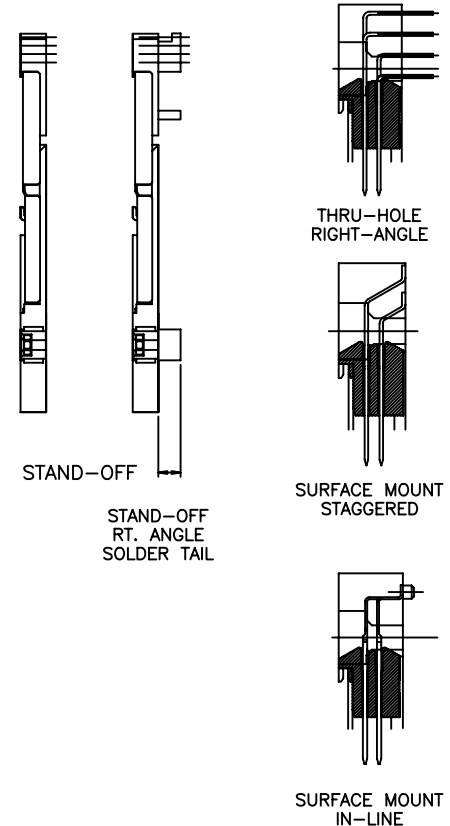
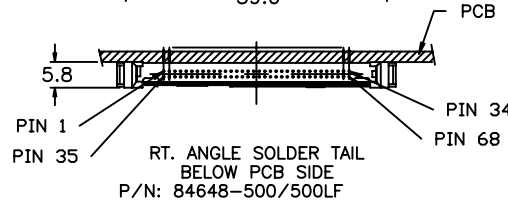
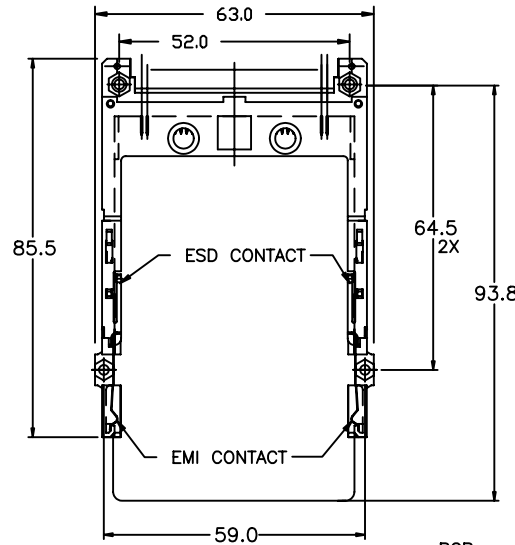
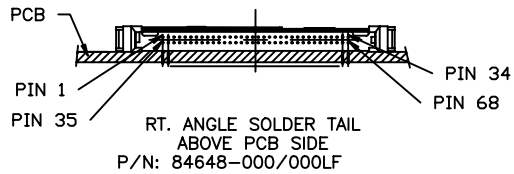
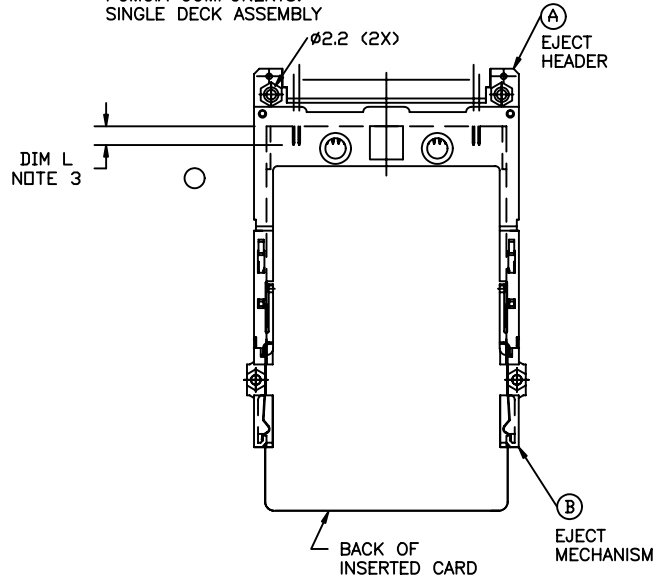


FCI CONFIDENTIAL



This document is the property of and embodies CONFIDENTIAL and PROPRIETARY information of FCI. No part of the information shown on this document may be used in any way or disclosed to others without the written consent of FCI. Copyright FCI.

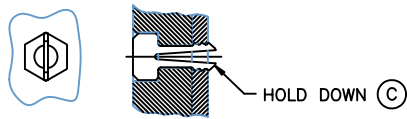
PCMCIA COMPONENTS:
SINGLE DECK ASSEMBLY



- NOTES: 1 REFER TO HEADER DRAWING 94898 AND NON-EJECT MECHANISM 92791 FOR ADDITIONAL DIMENSIONS, MATERIAL, AND PLATING INFORMATION.
2 REFER TO TA-946 FOR PCB LAYOUT AND PCB KEEP-OUT AREA.
3 RECOMMENDED SCREW TORQUE: 1.0 TO 1.5 MAX in-lbs. (1.2-1.7 cm-kgs).
4 PCB SIDE IS AS APPEARS INSTALLED.
5 SOLDER TAIL KEY:
R/A = RIGHT ANGLE PIN-THROUGH-HOLE
SMT-STG = STAGGERED SURFACE MOUNT
SMT-IL = SURFACE MOUNT IN-LINE (SINGLE ROW)
6 DIM L

| | | |
|----------|---------|------------------|
| 4.25±0.1 | 3.5±0.1 | 5.0±0.1 |
| OTHERS | 36,67 | 1,17,34,35,51,68 |

- 7 ADD "H" TO PART NUMBER FOR OPTIONAL HOLD DOWN (4 PER ASSEMBLY)

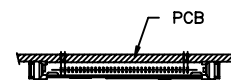
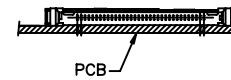


- 8 ADD "LF" TO PART NUMBER FOR LEAD-FREE TYPE.
9 IF LEAD FREE P/N. THE HOUSING WILL WITHSTAND EXPOSURE TO 260°C PEAK TEMPERATURE
SOLDER TAIL : SMT-IL, SMT-STG CAN RESIST 40 SECONDS IN A CONVECTION, INFRA-RED OR VAPOR PHASE REFLOW OVEN.
SOLDER TAIL : R/A CAN RESIST 10 SECONDS IN A WAVE SOLDER APPLICATION WITH A 1.00MM MINIMUM THICK CIRCUIT BOARD.
10 IF LEAD FREE P/N.THE PRODUCT MEETS EUROPEAN UNION DIRECTIVES AND OTHER COUNTRY REGULATIONS AS DISCRIBED IN GS-22-008
11 LEAD FREE P/N PACKAGING MEETS GS-14-920 SPECIFICATION

| | | | | | | | | | |
|-------------|----------|----------|----------|---------------------------------------|---------|------------|---------------|----------------|--|
| mat'l. code | | surface | | tolerance | | projection | | product family | |
| | | ISO 1302 | | ISO 406 ISO 1101 | | | | PCMCIA | |
| ltr | ecn no | dr | date | tolerances unless otherwise specified | | | | title | |
| M | N05-0181 | WB | 06/21/05 | angles | linear | .X±.3 | MM | | 68 POS. 3.3VNON-EJECT HEADER ASSEMBLY |
| N | N05-0190 | WB | 07/01/05 | | | .XX±.13 | | | |
| P | N06-0065 | MZ | 03/14/06 | ±2' | | .XXX±.051 | scale 1:1 | | |
| R | N07-0245 | MZ | 10/09/07 | dr | R.GRAPE | 6/22/98 | dwg no | | sheet 1of 4 size |
| S | N08-0099 | MZ | 05/19/08 | enr | D.BRANN | 6/22/98 | 84648 | | A4 |
| T | N08-0219 | MZ | 11/18/08 | chr | D.BRANN | 6/22/98 | type CUSTOMER | | Drawing |
| | | | | appd | D.BRANN | 6/22/98 | | | |
| sheet | revision | T | T | T | T | | | | |
| index | sheet | 1 | 2 | 3 | 4 | | | | |

PCMCIA COMPONENTS: SINGLE DECK ASSEMBLY

| PCB SIDE ④ | SOLDER TAIL ⑤ | STANDOFF (MM) | ① EJECT HEADER | ② EJECT MECHANISM | ③ NOTE ⑥ HOLD DOWN | QTY. | TO MAKE FINAL ASSY PART NUMBER | MOUNTING STYLE TO P.C.B. |
|------------|---------------|---------------|----------------|-------------------|--------------------|------|--------------------------------|--------------------------|
| ABOVE | R/A | NONE | 94898-000 | 92791-001 | | | 84648-000 | |
| ABOVE | R/A | NONE | 94898-000 | 92791-001 | 93925-001 | 4 | 84648-000H | |
| ABOVE | R/A | 2 | 94898-040 | 92791-021 | | | 84648-020 | |
| ABOVE | R/A | 2 | 94898-040 | 92791-021 | 93925-002 | 4 | 84648-020H | |
| ABOVE | R/A | 4 | 94898-010 | 92791-041 | | | 84648-040 | |
| ABOVE | R/A | 4 | 94898-010LF | 92791-041 | | | -040LF | |
| ABOVE | R/A | 4 | 94898-010 | 92791-041 | 93925-003 | 4 | 84648-040H | |
| ABOVE | R/A | 4 | 94898-010LF | 92791-041 | -003 | 4 | -040HLF | |
| ABOVE | R/A | 5 | 94898-020 | 92791-051 | | | 84648-050 | |
| ABOVE | R/A | 5 | 94898-020 | 92791-051 | 93925-004 | 4 | 84648-050H | |
| ABOVE | R/A | 5 | 94898-021MLF | 92791-051M | 93925-011 | 4 | 84648-050HLF | |
| ABOVE | R/A | 5 | 94898-020 | 92791-051 | 63284-104 | 2 | 84648-055 | |
| ABOVE | R/A | 5 | 94898-021MLF | 92791-051M | 63284-104 | 2 | 84648-055LF | |
| ABOVE | R/A | 5 | 94898-021MLF | 92791-053M | 63284-104 | 4 | 84648-056HLF | |
| ABOVE | R/A | 5 | 94898-021MLF | 92791-051M | 63284-011 | 4 | 84648-051HLF | |
| ABOVE | SMT-IL | NONE | 94898-002 | 92791-001 | | | 84648-002 | |
| ABOVE | SMT-IL | NONE | 94898-002LF | 92791-001 | | | -002LF | |
| ABOVE | R/A | NONE | 94898-000LF | 92791-001 | | | 84648-000LF | |
| ABOVE | R/A | NONE | 94898-000LF | 92791-001 | 93925-001 | 4 | 84648-000HLF | |
| ABOVE | R/A | 2 | 94898-040LF | 92791-021 | | | 84648-020LF | |
| ABOVE | R/A | 2 | 94898-040LF | 92791-021 | 93925-002 | 4 | 84648-020HLF | |
| ABOVE | R/A | 5 | 94898-020LF | 92791-051 | | | 84648-050LF | |
| ABOVE | SMT-IL | NONE | 94898-002 | 92791-001 | 93925-001 | 4 | 84648-002H | |
| ABOVE | SMT-STG | NONE | 94898-001 | 92791-001 | | | 84648-001 | |
| ABOVE | SMT-IL | NONE | 94898-002LF | 92791-001 | -001 | 4 | 84648-002HLF | |
| ABOVE | SMT-STG | NONE | 94898-001LF | 92791-001 | | | 84648-001LF | |
| BELOW | R/A | NONE | 94898-500 | 92791-001 | | | 84648-500 | |
| BELOW | R/A | 2 | 94898-540 | 92791-021 | | | 84648-520 | |
| BELOW | R/A | 4 | 94898-510 | 92791-041 | | | 84648-540 | |
| BELOW | R/A | 5 | 94898-520 | 92791-051 | | | 84648-550 | |
| BELOW | R/A | 5 | 94898-520 | 92791-051 | 93925-004 | 4 | 84648-550H | |
| BELOW | R/A | NONE | 94898-500LF | 92791-001 | | | 84648-500LF | |
| BELOW | R/A | 2 | 94898-540LF | 92791-021 | | | 84648-520LF | |
| BELOW | R/A | 4 | 94898-510LF | 92791-041 | | | 84648-540LF | |
| BELOW | R/A | 5 | 94898-520LF | 92791-051 | | | 84648-550LF | |
| BELOW | R/A | 5 | 94898-520LF | 92791-051 | 93925-004 | 4 | 84648-550HLF | |
| BELOW | SMT-IL | NONE | 94898-502 | 92791-001 | | | 84648-502 | |
| BELOW | SMT-IL | NONE | 94898-502 | 92791-001 | 93925-001 | 4 | 84648-502H | |
| BELOW | SMT-STG | NONE | 94898-501 | 92791-001 | | | 84648-501 | |
| BELOW | SMT-IL | NONE | 94898-502LF | 92791-001 | | | 84648-502LF | |
| BELOW | SMT-IL | NONE | 94898-502LF | 92791-001 | 93925-001 | 4 | 84648-502HLF | |
| BELOW | SMT-STG | NONE | 94898-501LF | 92791-001 | | | 84648-501LF | |



| | | | | | |
|---------------------------------------|----------|----------|------------------|---------------------------------------|----------------|
| mat'l. code | | surface | tolerance | projection | product family |
| | | ISO 1302 | ISO 406 ISO 1101 | | PCMCIA |
| ltr | ecr no | dr | date | title | |
| T | | | | 68 POS. 3.3VNON-EJECT HEADER ASSEMBLY | |
| tolerances unless otherwise specified | | | | angles | linear |
| | | | | .X±.3 | MM |
| | | | | .XX±.13 | ← |
| | | | | ±2' | .XXX±.051 |
| | | | | scale | 1:1 |
| dr | | R.GRAPE | 6/22/98 | dwg no | |
| enr | | D.BRANN | 6/22/98 | sheet 2of 4 size | |
| chr | | D.BRANN | 6/22/98 | 84648 A4 | |
| appd | | D.BRANN | 6/22/98 | type CUSTOMER Drawing | |
| sheet index | revision | | | | |
| | sheet | | | | |

PDM: Rev:T

STATUS: Released

Printed: May 06, 2009

FCI CONFIDENTIAL

fciconnect.com

This document is the property of and embodies CONFIDENTIAL and PROPRIETARY information of FCI. No part of the information shown on this document may be used in any way or disclosed to others without the written consent of FCI. Copyright FCI.

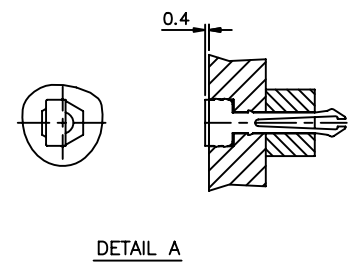
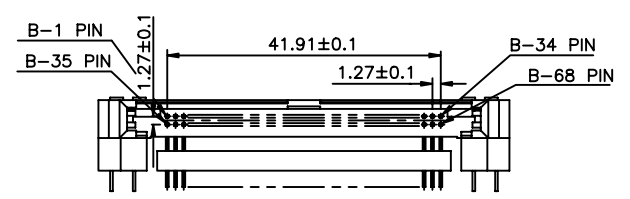
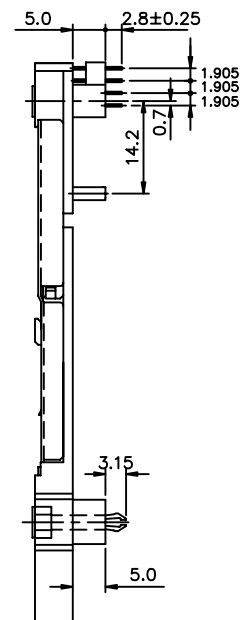
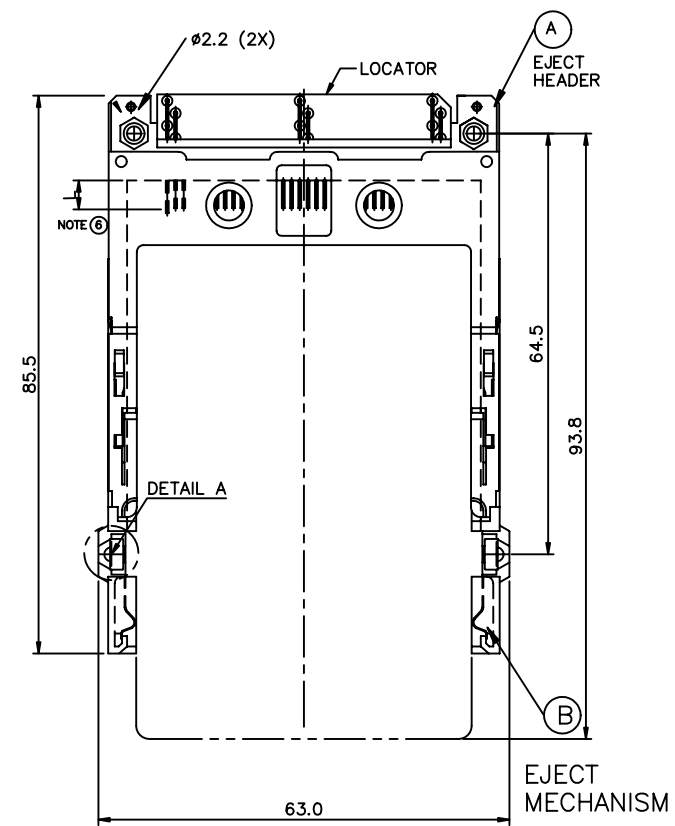
FCI CONFIDENTIAL



FCIconnect.com

This document is the property of and embodies CONFIDENTIAL and PROPRIETARY information of FCI. No part of the information shown on this document may be used in any way or disclosed to others without the written consent of FCI. Copyright FCI.

PRODUCT NO.
84648-055/055LF



84648-X X X X

| | |
|--------------------|--------------------------------------|
| OPTIONAL LEED FREE | NONE : N 0 |
| OPTIONAL HOLD DOWN | NONE : N 0 |
| SOLDER TAIL | H : YES (SEE FIGURE OF -xxxH) |
| STAND OFF | 0 : R/A |
| | 1 : SMT STAGGERED |
| | 2 : SMT IN LINE |
| | 5 : R/A (MECHANISM WITH 2 HOLD DOWN) |
| | 6 : R/A (COVER WITH SPRING) |
| MOUNTING STYLE | 0 : 0mm |
| | 2 : 2mm |
| | 4 : 4mm |
| | 5 : 5mm |
| | 0 : TOP MOUNTING |
| | 5 : BOTTOM MOUNTING |

| | | | | | |
|-------------|--------|----------------|------------------|---------------------------------------|---------------------------------------|
| mat'l. code | | surface | tolerance | projection | product family |
| | | ISO 1302 | ISO 406 ISO 1101 | | PCMCIA |
| ltr | ecn no | dr | date | tolerances unless otherwise specified | |
| T | | | | angles | linear |
| | | | | .X±.3 | .XX±.13 |
| | | | | ±2' | .XXX±.051 |
| | | dr | R.GRAPE | 6/22/98 | scale 1:1 |
| | | enr | D.BRANN | 6/22/98 | |
| | | chr | D.BRANN | 6/22/98 | |
| | | appd | D.BRANN | 6/22/98 | |
| sheet index | | revision sheet | | | title |
| | | | | | 68 POS. 3.3VNON-EJECT HEADER ASSEMBLY |
| | | | | | dwg no |
| | | | | | 84648 |
| | | | | | sheet 3 of 4 size |
| | | | | | A4 |
| | | | | | type CUSTOMER Drawing |

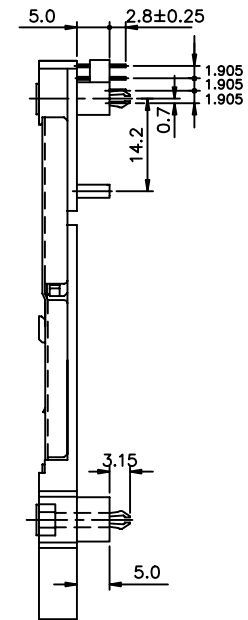
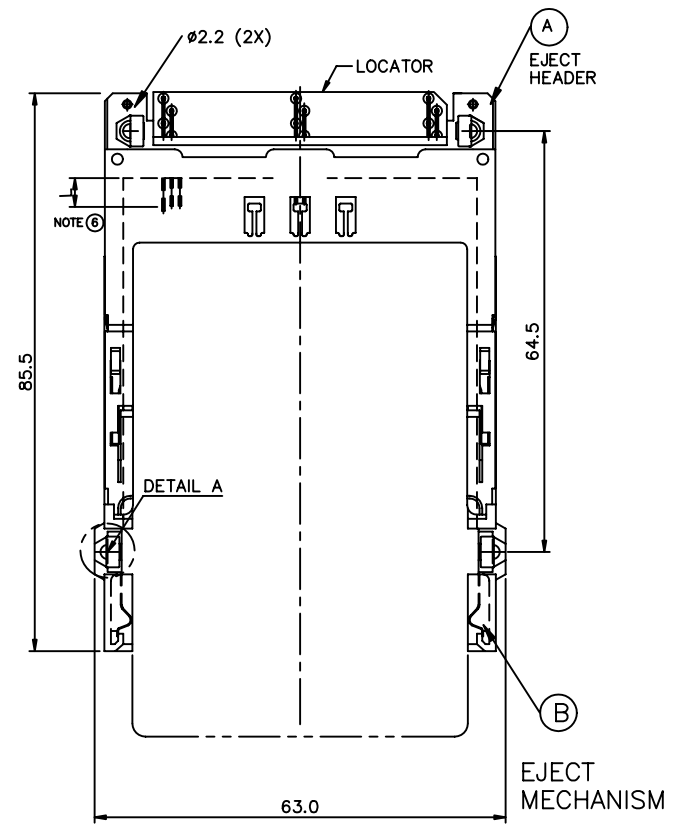
FCI CONFIDENTIAL



This document is the property of and embodies CONFIDENTIAL and PROPRIETARY information of FCI. No part of the information shown on this document may be used in any way or disclosed to others without the written consent of FCI.
Copyright FCI

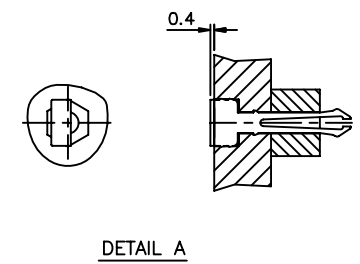
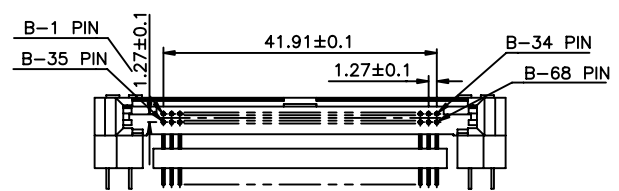
FCIconnect.com

PRODUCT NO.
84648-056HLF



84648-XXXX

| | |
|--------------------|--|
| OPTIONAL LEED FREE | NONE : N 0 LF : YES |
| OPTIONAL HOLD DOWN | NONE : N 0 H : YES (SEE FIGURE OF -xxxH) |
| SOLDER TAIL | 0 : R/A 1 : SMT STAGGERED 2 : SMT IN LINE 5 : R/A (MECHANISM WITH 2 HOLD DOWN) 6 : R/A (COVER WITH SPRING) |
| STAND OFF | 0 : 0mm 2 : 2mm 4 : 4mm 5 : 5mm |
| MOUNTING STYLE | 0 : TOP MOUNTING 5 : BOTTOM MOUNTING |



| | | | | | |
|-------------|--------|----------|------------------|---------------------------------------|--|
| mat'l. code | | surface | tolerance | projection | product family |
| | | ISO 1302 | ISO 406 ISO 1101 | | PCMCIA |
| ltr | ecn no | dr | date | tolerances unless otherwise specified | |
| T | | | | angles | linear |
| | | | | .X±.3 | .XX±.13 |
| | | | | ±2' | .XXX±.051 |
| | | dr | R.GRAPE | 6/22/98 | title |
| | | enr | D.BRANN | 6/22/98 | 68 POS. 3.3VNON-EJECT HEADER ASSEMBLY |
| | | chr | D.BRANN | 6/22/98 | dwg no |
| | | appd | D.BRANN | 6/22/98 | 84648 |
| sheet | | revision | | | sheet 4 of 4 size |
| index | sheet | | | | A4 |
| | | | | | type CUSTOMER Drawing |