



 Introduction section



 Product Catalog



FCI: SETTING THE STANDARD FOR CONNECTORS

With 13,000 employees in 30 countries and sales of 1.25 billion euros in 2008, FCI is a leading manufacturer of connectors for various markets such as automotive, telecommunication infrastructures and consumer and industrial electronics.

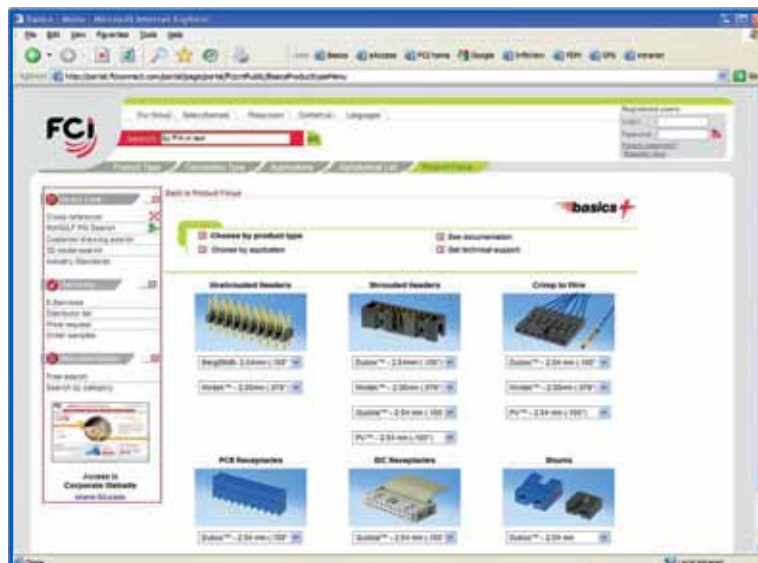


MORE SERVICE.



+ More Service

Easy product selection, samples, prototypes, documentation, drawings and more at www.fciconnect.com/basics



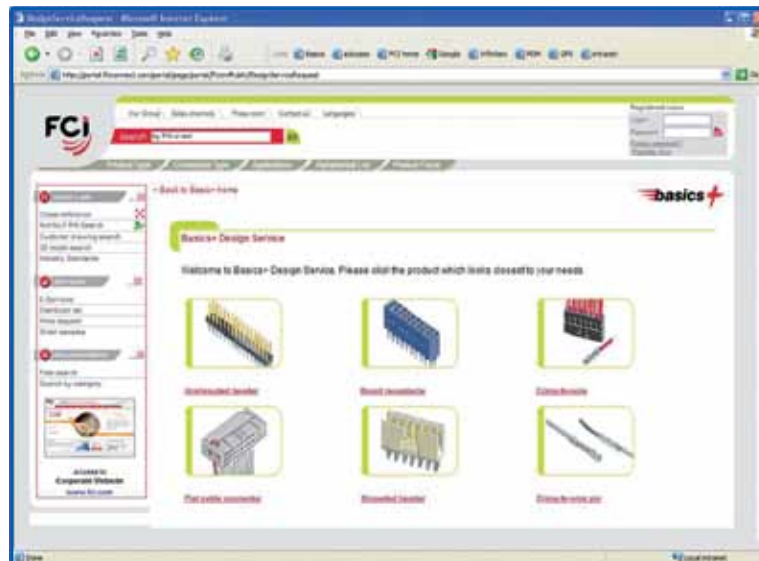
LESS WAITING.

+ Easy Availability

Catalog range direct from FCI's extensive local distribution network.
Global too: design here, build there.

+ Easy Customization

Just go here
www.fciconnect.com/basicsdesign
and tell us what you want



UNSHROUDED HEADERS



BergStik® Unshrouded Headers 2.54mm (.100")	
Vertical - standard sizes	8
Vertical - surface mount	10
Vertical - continuous	12
Right angle - standard sizes	14
Stacking headers	16
Minitek™ Unshrouded Headers 2.00mm (.079")	
Vertical	50
Right angle	52
Pin-in-Paste	54
Stacking	56

SHROUDED HEADERS



Dubox™ Shrouded Headers 2.54mm (.100)	28
PV™ Superior Performance Shrouded Headers 2.54mm (.100")	34
Minitek™ Shrouded Headers 2.00mm (.079")	
Vertical	62
Right angle	64
Pin-in-Paste	66
Eject latch	68
Quickie® Shrouded Headers 2.54mm (.100")	
Low Profile	40
Surface Mount and Pin-in-Paste	42
Eject latch	44

BOARD-TO-BOARD RECEPTACLES



Dubox™ Board-to-Board Receptacles 2.54mm (.100")	
Vertical	20
Low profile vertical - through mount	22
Low profile vertical - surface mount	24
Horizontal	26
Minitek™ Vertical receptacles	58

CRIMP-TO-WIRE TERMINALS AND HOUSINGS



Dubox™ Crimp-To-Wire 2.54mm (.100")	
Contacts	30
Housings	32
PV™ Superior Performance Crimp-To-Wire 2.54mm (.100")	
Contacts	36
Housings	38
Minitek™ Crimp-To-Wire 2.00mm (.079")	
Contacts	70
Housings	70
Active latch	72

IDC RECEPTACLES



Quickie® IDC Receptacles 2.54mm (.100")	46
Quickie® IDC PCB connector 2.54mm (.100")	48
Minitek™ IDC strain relief	74

SHUNTS



Dubox™ Shunts 2.54mm (.100")	18
Minitek™ Shunts 2.00mm (.079")	60

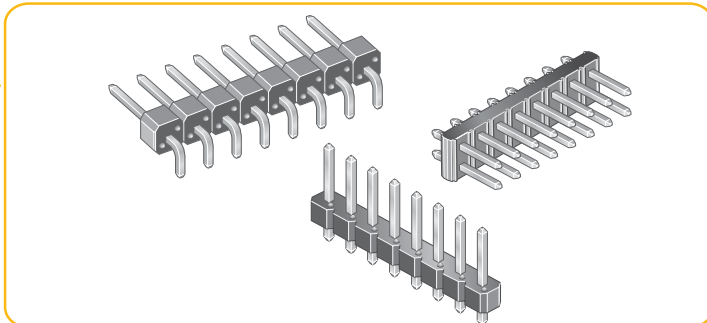
MORE OPTIONS	76
APPLICATION EQUIPMENT	78
PART NUMBER INDEX	80



Standard parts available for immediate shipment from participating distributors

Pin-in-Paste

Our new PiP range has been specifically designed to meet the requirements of this process, complete with paste stencil design
Pages 54, 66



Minitek Active Latch

A latching crimp-to-wire system for demanding environments
Pages 64, 72



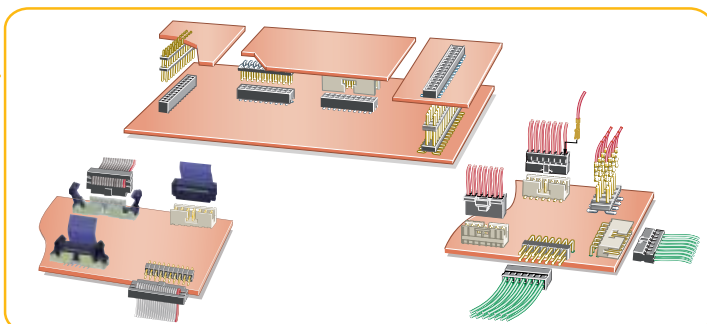
Minitek Eject Latch Header

This ribbon cable connector mates securely, but can be unmated with no difficulty.
Pages 68, 74



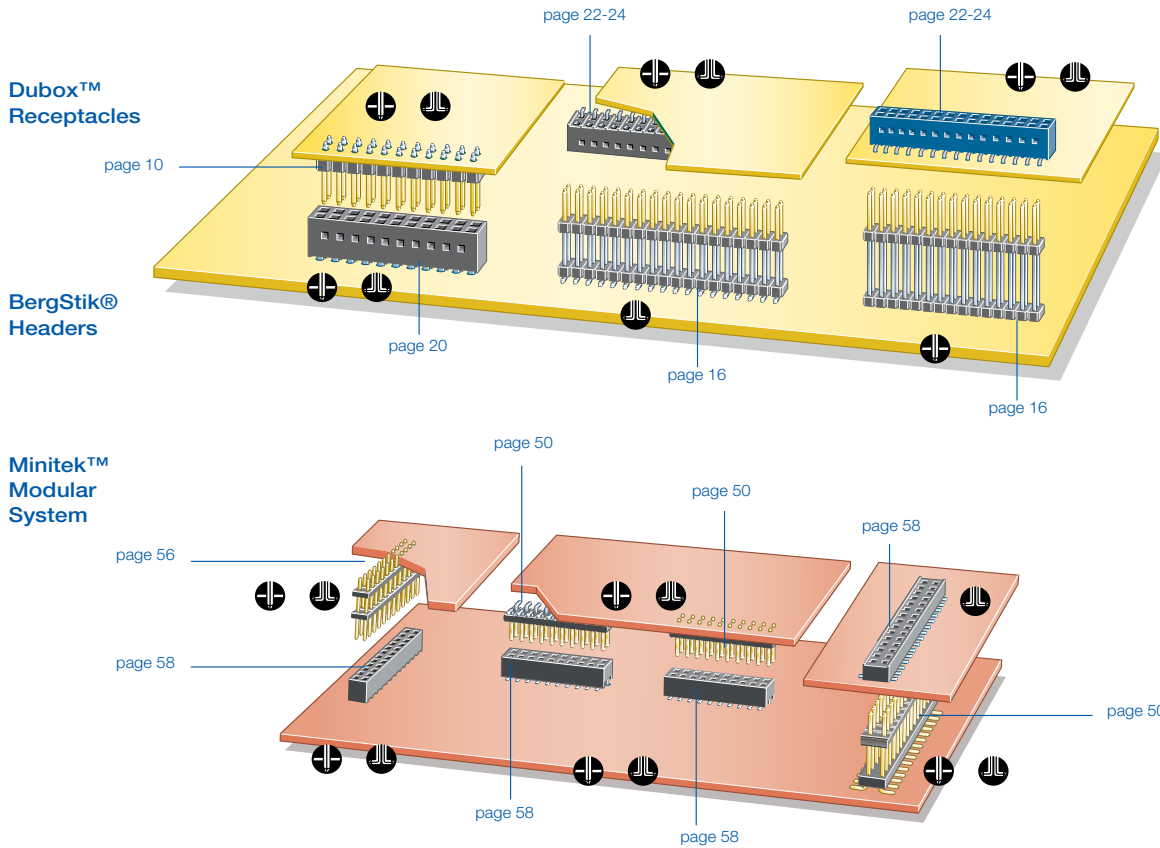
The Minitek 2mm Modular System

Now the most complete and versatile system available: intermateable, high temperature compatible, low coplanarity and space saving
Pages 50 – 74

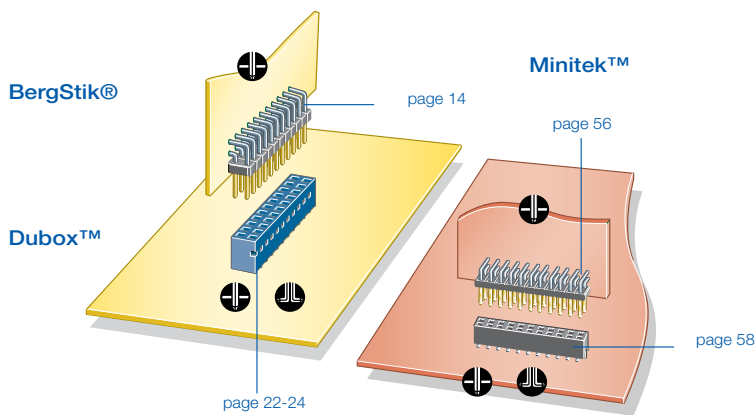


BOARD-TO-BOARD SOLUTIONS

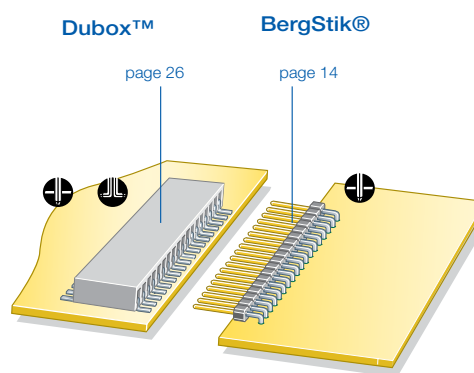
PARALLEL



PERPENDICULAR



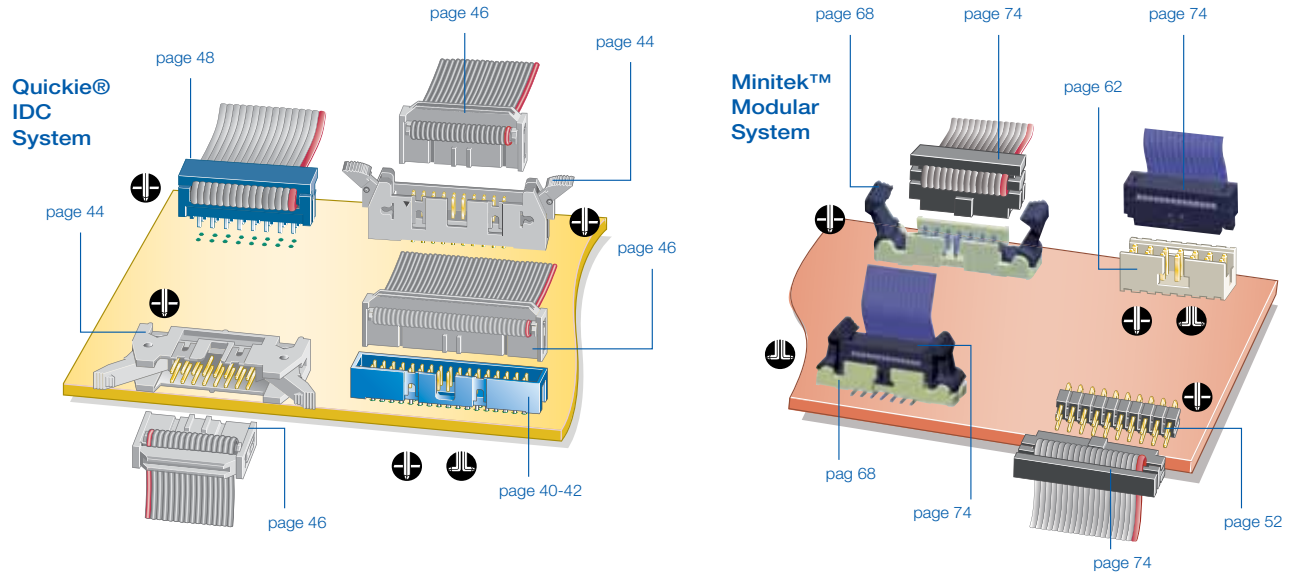
PLANAR



- = 2.54 mm
- = 2.00 mm
- = Through Mount
- = Surface Mount

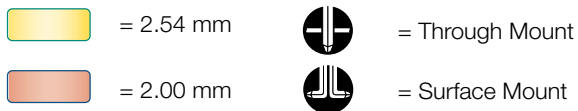
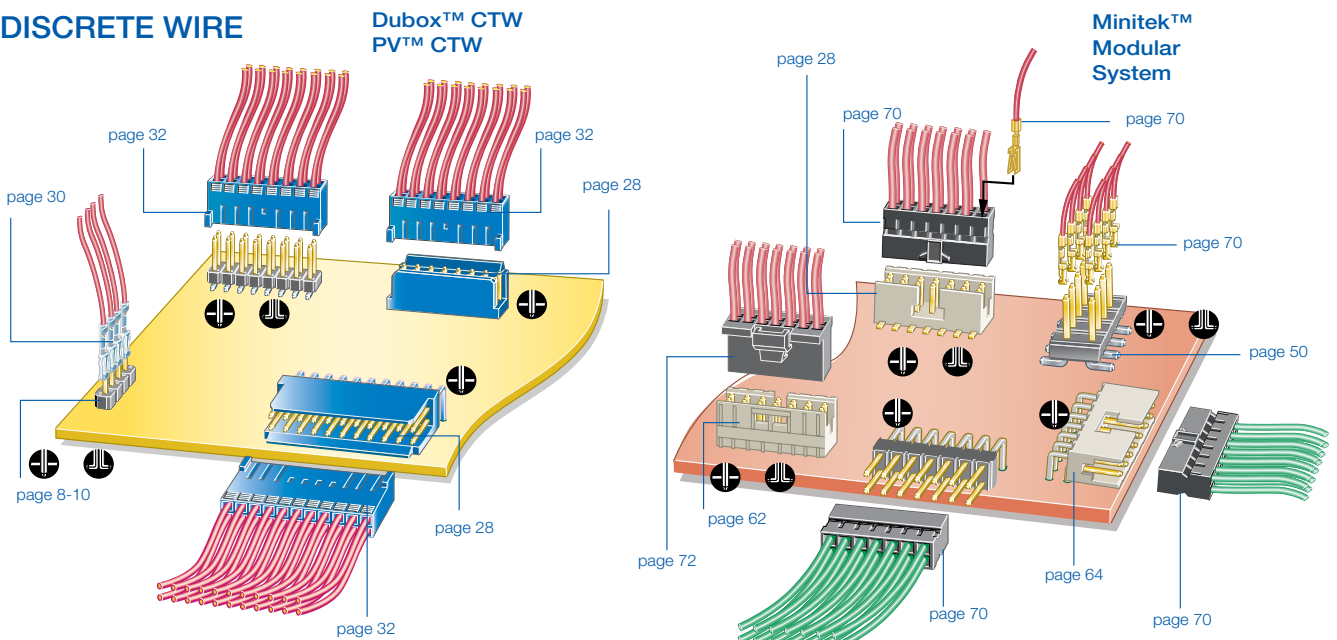
CABLE-TO-BOARD SOLUTIONS

FLAT CABLE IDC



WIRE-TO-BOARD SOLUTIONS



DISCRETE WIRE



ELXBASICUS0610ELT

For more information about e-catalog or FCI
sales offices, headquarters, agents and local distributors,
visit www.fciconnect.com



Americas - Phone: 1 (800) 237 2374  Europe- - Phone: 33 1 39 49 21 83  Asia/Pacific - Phone: 65 6549 6666